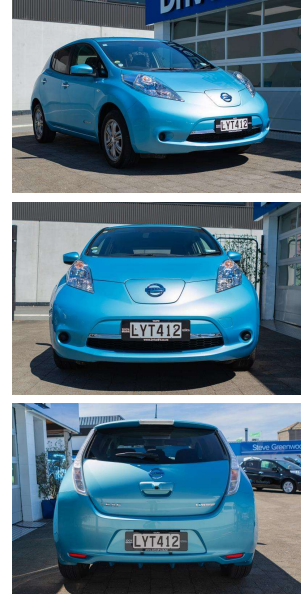


# 2015 Nissan LEAF 30kWh Gen 2 S



## VEHICLE INFORMATION

### Cash Price

Includes GST,  
Registration &  
Licensing

**\$26,990**

Finance this vehicle  
from only

**\$161.42**

per week\*

Total Amount Payable

**\$33,576.24**



New Zealand's Finance Company



Gain peace of mind  
with Mechanical  
Breakdown Insurance.  
Ask us how.

### Body

5 door, Hatchback

### Odometer

23,337 km

### Engine

0 cc, Electric

### Fuel Type

Electric

### Transmission

Auto

### Wheels

-

### VIN

-

### Reg No.

LYT412

### Ext Colour

Blue

### History

Ex-Overseas

### Seats

5 seats

### Interior

Black

### Audio

-

### Stock ID

9001

### Exterior Features

- » 100% Electric
- » 12 Bars
- » 150kms highway range
- » 200kms round town range
- » 30kWh Battery
- » CHAdeMO
- » LED Headlights
- » Rear Camera
- » Type 1 AC 3.3kW Charging

### Interior Features

- » Android Auto
- » Apple Car play
- » CD(s)
- » Climate Control
- » Digital Display
- » English speedo cluster
- » GPS/Sat Nav
- » Heated Seats
- » ISOFIX

### Mechanical Features

- » ABS Braking



Drive EV, Phone 07 3780082, Email [steve@driveev.co.nz](mailto:steve@driveev.co.nz)  
60 Tuwharetoa Street, Taupo 3330, New Zealand  
[www.driveev.co.nz](http://www.driveev.co.nz)

\* Finance calculation based on a 48 month term, no deposit and with an example annual fixed interest rate of 9.95%. Actual interest rate may be higher or lower. Includes an establishment fee of \$419.00 and a monthly maintenance fee of \$5.00. Full term total amount payable of \$33,576.24. Estimate only, not an offer of finance. Terms, conditions and lending criteria apply.