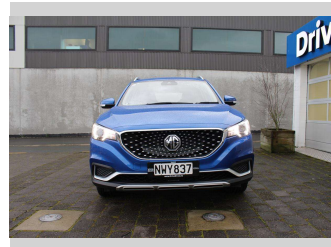
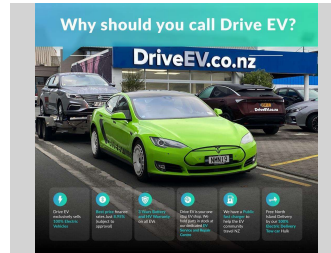


2021 MG ZS EV 105KW/EV/AT



Purchase Price

Includes GST, Registration & Licensing

\$21,990

Indicative repayments

\$132.19 per week*

Based on a 48 month term & no deposit.
Total repayments (208) = **\$27,494.99**



Gain peace of mind with
Mechanical Breakdown
Insurance. **Ask us how.**

Top features

- » 100% Electric
- » 200kms Highway range
- » 260kms round town rang...
- » 44.5kWh Liquid cooled...
- » 5 Star safety rating
- » 50kW DC Fast Charging
- » 6.6kW Type 2 AC chargi...
- » Active Battery Cooling
- » Adaptive Cruise Contro...
- » Adaptive LED headlight...
- » Android Auto
- » Apple Car play
- » Blind spot monitoring
- » CCS
- » Cross Traffic Alert
- » Daytime LED runing lig...
- » ESP
- » Forward collision miti...

Body Style

SUV / 4x4

Odometer

36,360 km

Engine

0 cc

Fuel Type

Electric

Transmission

Auto

Wheels

-

VIN

-

Interior

Black

Safety



Based on 2019 ANCAP rating
for 20-22 models

Reg No.

NWY837

Ext Colour

Blue

History

-

Seats

-

CO2 Emissions

★★★★★☆☆

0 grams/km

Energy Economy

★★★★★☆☆

Annual fuel cost of \$1,710

Cost per year is an estimate based on electricity price of \$0.27 per kWh and an average distance of 14000 km. Includes Road User Charges (RUC). Emissions and Energy Economy figures standardised to 3P WLTP.

Stock ID: 10161



Drive EV | Phone 07 3780082 | Email steve@driveev.co.nz
60 Tuwharetoa Street, Taupo 3330, New Zealand
www.driveev.co.nz



★★★★★
4.85 | 627 reviews

* Drive EV is not a lender nor a financial adviser. Any amounts displayed should not be seen as an offer of finance or taken as financial advice. The interest rate, fees and loan term used in this calculation may not actually represent those available from lenders. Actual interest rates, fees and loan terms will vary per lender and are typically based on an assessment of your credit risk and responsible lending criteria. Any repayment amounts displayed are indicative only and have been calculated using several other indicative inputs. The interest rate used in this calculation is an arbitrary 9.95%, however exact interest rates vary per lender. The term of the loan used in this calculation is 48 month. Exact terms available vary per lender although options typically include 6, 12, 18, 24, 36, 48 and 60 months. This calculation also includes two typical mandatory fees charged by lenders. These are an account admin fee of \$5.00 per month (other payment frequencies may be available) and a one-off establishment fee of \$419.00. Typically, this fee can be paid upfront or, as in this calculation, be capitalised over the contract term, ie. included in the loan amount. These fees can vary per lender and other non-mandatory fees and charges may also apply. The total amount of repayments has been calculated by multiplying 208 weekly repayments (based on a 48 month term) by the weekly repayment amount of \$132.19 which equals \$27,494.99. This calculator does not consider any of your own personal circumstances and we strongly suggest you seek budgeting advice prior to committing to any loan contract. Responsible lending criteria and lender terms and conditions will likely apply to any finalised loan contract. Proof of security and/or vehicle insurance may also be required before proceeding.