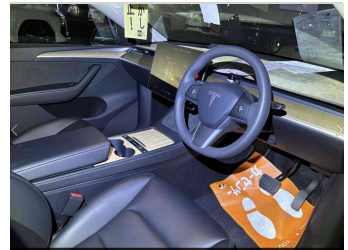
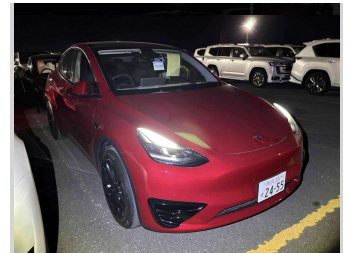



2023 Tesla Model Y REAR WHEEL DRIVE 60K



Purchase Price **\$57,990**
Includes GST, Registration & Licensing

Indicative repayments
\$342.69 per week*
Based on a 48 month term & no deposit.
Total repayments (208) = **\$71,280.05**



Gain peace of mind with
Mechanical Breakdown Insurance. Ask us how.

Top features

- » 16V Lithium-ion LV Bat...
- » 170kW DC Charging with...
- » 350kms Highway Range
- » 400kms Round Town Rang...
- » 60kWh LFP HV Battery
- » Active Battery Cooling
- » Adaptive Cruise Contro...
- » Auto tailgate
- » CCS Enabled
- » Daytime LED runing lig...
- » ESP
- » Forward collision miti...
- » Full Self Driving Comp...
- » Heated Seats
- » Laminated Glass
- » LED rear tail lights
- » Matrix LED headlights...
- » One Pedal Driving


Body Style	Hatchback	Reg No.	-
Odometer	6,800 km	Ext Colour	Red
Engine	0 cc	History	-
Fuel Type	Electric	Seats	-
Transmission	Auto	CO2 Emissions	-
Wheels	-	Energy Economy	☆☆☆☆☆☆
VIN	LRWYHCFS4PC128267	Annual fuel cost not available	
Interior	Black	Energy Consumption unknown.	
Safety	-		



Stock ID: 10271



Drive EV | Phone 07 3780082 | Email steve@driveev.co.nz
60 Tuwharetoa Street, Taupo 3330, New Zealand
www.driveev.co.nz



4.85 | 675 reviews

* Drive EV is not a lender nor a financial adviser. Any amounts displayed should not be seen as an offer of finance or taken as financial advice. The interest rate, fees and loan term used in this calculation may not actually represent those available from lenders. Actual interest rates, fees and loan terms will vary per lender and are typically based on an assessment of your credit risk and responsible lending criteria. Any repayment amounts displayed are indicative only and have been calculated using several other indicative inputs. The interest rate used in this calculation is an arbitrary 9.95%, however exact interest rates vary per lender. The term of the loan used in this calculation is 48 month. Exact terms available vary per lender although options typically include 6, 12, 18, 24, 36, 48 and 60 months. This calculation also includes two typical mandatory fees charged by lenders. These are an account admin fee of \$5.00 per month (other payment frequencies may be available) and a one-off establishment fee of \$419.00. Typically, this fee can be paid upfront or, as in this calculation, be capitalised over the contract term, ie. included in the loan amount. These fees can vary per lender and other non-mandatory fees and charges may also apply. The total amount of repayments has been calculated by multiplying 208 weekly repayments (based on a 48 month term) by the weekly repayment amount of \$342.69 which equals \$71,280.05. This calculator does not consider any of your own personal circumstances and we strongly suggest you seek budgeting advice prior to committing to any loan contract. Responsible lending criteria and lender terms and conditions will likely apply to any finalised loan contract. Proof of security and/or vehicle insurance may also be required before proceeding.