

2016 Nissan LEAF 30kWh Gen 2 X



Why should you call Drive EV?

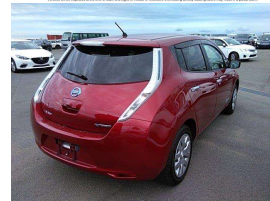
- Drive EV exclusively sells used, electric vehicles.
- Our customers benefit from our 100% electric vehicle program.
- Drive EV is a 100% electric vehicle company.
- Our customers benefit from our 100% electric vehicle program.
- Our customers benefit from our 100% electric vehicle program.
- Our customers benefit from our 100% electric vehicle program.
- Our customers benefit from our 100% electric vehicle program.
- Our customers benefit from our 100% electric vehicle program.

DRIVE EV
100% ELECTRIC VEHICLES

Drive EV Battery & High Voltage System Warranty

What is covered?

The warranty covers the battery pack and all high voltage electrical components of the vehicle's high voltage system. It covers the battery pack and all high voltage electrical components of the vehicle's high voltage system. It covers the battery pack and all high voltage electrical components of the vehicle's high voltage system.



VEHICLE INFORMATION

Cash Price

Includes GST,
Registration &
Licensing

\$27,990

Finance this vehicle
from only

\$167.27

per week*

Total Amount Payable

\$34,792.50



New Zealand's Finance Company



Gain peace of mind
with Mechanical
Breakdown Insurance.
Ask us how.

Body

5 door, Hatchback

Odometer

16,565 km

Engine

0 cc, Electric

Fuel Type

-

Transmission

Auto

Wheels

-

VIN

-

Reg No.

-

Ext Colour

Wine red

History

Ex-Overseas

Seats

5 seats

Interior

Black

Audio

-

Stock ID

9121

Exterior Features

- » 100% Electric
- » 150kms highway range
- » 200kms round town range
- » 30kWh Battery
- » 50kW DC Fast Charging
- » CHAdeMO
- » LED Headlights
- » Rear Camera
- » Type 1 AC 3.3kW Charging

Interior Features

- » Air Bag(s)
- » Child seat anchor points
- » Climate Control
- » Digital Display
- » English speedo cluster
- » Heated Seats
- » ISOFIX
- » MP3 Input

Mechanical Features

- » ABS Braking
- » Cruise Control
- » LDW



Drive EV, Phone 07 3780082, Email steve@driveev.co.nz
60 Tuwharetoa Street, Taupo 3330, New Zealand
www.driveev.co.nz

* Finance calculation based on a 48 month term, no deposit and with an example annual fixed interest rate of 9.95%. Actual interest rate may be higher or lower. Includes an establishment fee of \$419.00 and a monthly maintenance fee of \$5.00. Full term total amount payable of \$34,792.50. Estimate only, not an offer of finance. Terms, conditions and lending criteria apply.