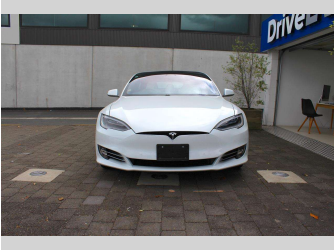
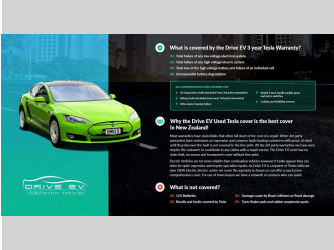
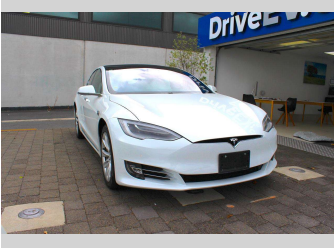


2018 Tesla Model S 100D



Purchase Price

\$59,990

Includes GST, Registration & Licensing

Indicative repayments

\$354.39 per week*

Based on a 48 month term & no deposit.
Total repayments (208) = \$73,712.55

Gain peace of mind with
Mechanical Breakdown
Insurance. Ask us how.

Top features

» 100% Electric

» 100kW + Tesla Supercha...

» 100kWh Battery Pack

» 19 Inch Slipstream All...

» 430kms Highway Range

» 5 Star safety rating

» 500kms City Range

» Active Battery Cooling

» Adaptive Cruise Contro...

» Adaptive LED headlight...

» AP2 Hardware

» AutoPilot

» CCS Enabled

» Child seat anchor poin...

» Daytime LED runing lig...

» Digital Display

» Dual Motor

» English converted head...

Body Style

5 door, Hatchback

Odometer

74,814 km

Engine

0 cc, Electric

Fuel Type

Electric

Transmission

Auto

Wheels

-

VIN

5YJSB7E27JF289113

Interior

Ivory, Leather

Safety

Based on 2023 VSRR rating

Reg No.

-

Ext Colour

Pearl

History

Ex-Overseas

Seats

5 seats

CO2 Emissions

★★★★★☆☆
0 grams/km

Energy Economy

★★★★★☆☆
Annual fuel cost not available

Cost per year is an estimate based on electricity price of \$0.27 per kWh and an average distance of 14000 km. Emissions and Energy Economy figures standardised to 3P WLTP.

Stock ID: 9979

* Drive EV is not a lender nor a financial adviser. Any amounts displayed should not be seen as an offer of finance or taken as financial advice. The interest rate, fees and loan term used in this calculation may not actually represent those available from lenders. Actual interest rates, fees and loan terms will vary per lender and are typically based on an assessment of your credit risk and responsible lending criteria. Any repayment amounts displayed are indicative only and have been calculated using several other indicative inputs. The interest rate used in this calculation is an arbitrary 9.95%, however exact interest rates vary per lender. The term of the loan used in this calculation is 48 month. Exact terms available vary per lender although options typically include 6, 12, 18, 24, 36, 48 and 60 months. This calculation also includes two typical mandatory fees charged by lenders. These are an account admin fee of \$5.00 per month (other payment frequencies may be available) and a one-off establishment fee of \$419.00. Typically, this fee can be paid upfront or, as in this calculation, be capitalised over the contract term, ie. included in the loan amount. These fees can vary per lender and other non-mandatory fees and charges may also apply. The total amount of repayments has been calculated by multiplying 208 weekly repayments (based on a 48 month term) by the weekly repayment amount of \$354.39 which equals \$73,712.55. This calculator does not consider any of your own personal circumstances and we strongly suggest you seek budgeting advice prior to committing to any loan contract. Responsible lending criteria and lender terms and conditions will likely apply to any finalised loan contract. Proof of security and/or vehicle insurance may also be required before proceeding.

Generated 06 May 2024 11:18